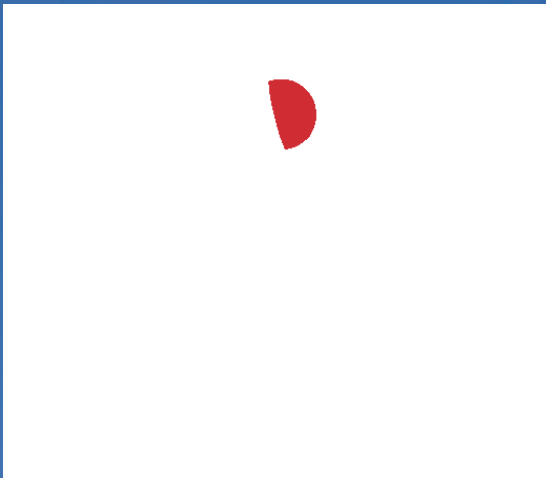


WELCOME TO THAILAND







WELCOME TO SUNSAIL THAILAND

“
On behalf of the entire Thailand team, we look forward to receiving you here in Phuket, and wish you fair winds and smooth sailing while enjoying the picturesque sailing grounds around Phuket, Krabi, and Phang-Na. Should you have any questions or additional needs during your time with us, please reach out to myself or one of my team members as we would be happy to assist you to ensure your experience with us is truly remarkable.”

Ash Rodney, Base Manager

SHARE YOUR SUNSAIL EXPERIENCE

We love to see what you've been up to on your holiday. Share your photos on Facebook, Twitter and Instagram making sure to tag:

#sunsail @sunsailholidays #sunsailthailand



TABLE OF CONTENTS

AO PO GRAND MARINA	6
Marina Facilities	6
Time difference	6
TEAM CONTACT NUMBERS	7
TRANSFER	7
CAR RENTAL	7
WHILE AT THE AIRPORT	7
UPON ARRIVAL	8
Check in procedure	8
Area and Boat Briefing	8
Sailing Licence	8
What can you do whilst waiting for your boat?	9
Provisioning	9
Cool boxes	9
Barbecue	9
WiFi	9
Music	9
Electricity	9
Boat papers	9
Currency exchange and Credit Cards	9
Water and refuse	10
Refueling	10
Before leaving the Base	10
Skippered Charter	10
Sustainability	11
WHEN YOU RETURN TO BASE	13
Return to Base Procedure	13
Before you leave your boat	13
USEFUL INFORMATION	15
Non-Sailing Activities	15
Restaurants and Tipping / Fishing / Diving schools	15
Language - Useful words & phrases	16
Cruising Area	16
Prevailing Winds	17
Weather Forecasts	17

USEFUL INFORMATION	17
Tidal Streams	17
Calculating your Depth of Water	17
Mooring Buoys	18
Accidental Grounding	18
Rule of the Road	19
Fishing Nets	19
Sunset and Anchoring	19
Night Sailing	19
Marine Animals	20
Regattas in Phuket	22
DESTINATIONS & ITINERARIES	24
SUGGESTED ITINERARIES	24
North Eastern Season - 2 week route	24
North Eastern Season - 1 week route	25
South Western Season - 1 week route	25
South Western Season - 2 week route	26
Hospitals and Water Refill	26
DESTINATION SPOTLIGHTS	27
Koh Hong Phang Na	27
Koh Phing Kan - James Bond island	28
Koh Pan Yi	28
Koh Roi	29
Koh Hong Krabi	29
Koh Yao Noi	30
Railey / Ao Nang	30
Koh Dam Khwan- Chicken Head island	31
Koh Mai Pai	31
Koh Phi Phi Don	32
Koh Phi Phi Ley	32
Koh Lanta Old town	33
Koh Muk - Emerald Cave	33
Koh Kradan	34
Koh Rok Nok / Nai	34
Koh Similans	35
SHARE YOUR EXPERIENCE	36



AO PO GRAND MARINA

Our Phuket base is located at the new Ao Po Grand Marina near Ao Po Bay. Ao Po Grand Marina has the benefit of 24 hour access independent of the tide. It is also ideally situated at the gateway to stunning Phang Nga Bay and is conveniently close to Phuket's major facilities (30 minutes from the airport) and holiday destinations.

AO PO GRAND MARINA FACILITIES

- WiFi at the office and restaurants
- Toilets & Showers - available from 08:00 to 18:00
- Water and Electricity on the berths at the Base and a deep water Fuel dock
- ATM - in the marina car park
- Port O'Call Restaurant with a pool overlooking the marina
- Small local "Ahan Tam Sang" food-as-you order are within 5 minutes walking distance
- No currency exchange or shops present

TIME DIFFERENCE

Thailand is ICT
(Indo China Time),
so +7 hours UTC/
GMT



TEAM CONTACT NUMBERS

Ash Rodney	
Base Manager	00 66 89 871 1670
Customer Service	00 66 76 317 309
Technical Support	00 66 98 015 4577
VHF	72 Sunsail (within working hours)
	69 Ao Po Grand Marina (outside w.o.)

Reception Office Hours
7 days a week
08.00 - 17.00

If you are arriving after 5pm
we will leave a note for you
on the Reception Front Door



TRANSFER

On arrival to Phuket, a transfer from the airport to the base can be arranged. If you would like to use this service, we just need your flight number and arrival details prior to departure for Phuket Airport. There will then be a Sunsail driver waiting for you with a Sunsail board to bring you directly to the Marina. Transfers from Phuket Airport to the base takes about 25 minutes, the approximate cost for up to four people is **THB 800**, up to 6 people is **THB 950** and a minibus for up to eight people is about **THB 1100** each way.

The Airport taxis generally do not know where the Sunsail office is in the Ao Po Marina and clients may be dropped off at the wrong place and sometimes even the wrong marina. If your holiday is flight exclusive, we request that you send your travel arrangements to us prior to departure so we can assist with transfer details where required.

Please note: guests arriving separately should bring a copy of the charter contract/invoice.

CAR RENTAL

At the airport you will find, David Car Rent and Airport Car Rent which is one of the few companies that rent self drive mini busses

WHILE AT THE AIRPORT

You may wish to exchange currency (It is recommended that you have TBH 1000 per person per day onboard) and buy a mobile SIM card while at the airport. Check if your mobile services provider covers Thailand with their signal. You will also need to activate international roaming. Much cheaper and recommended option is to buy a local SIM card- you will need your passport for that.



UPON ARRIVAL

CHECK IN PROCEDURE

Charters can start and finish on any day of the week and all charters commence at 4pm on the first day and finish at 9am on the last day. However, we always try to be as flexible as possible and we are happy for clients to contact the base prior to arrival as the yacht may be available earlier so that they may board early.

Please come to our Reception with these things ready:

- Face mask
- Passports for every crew member
- Valid skippers licence
- Credit card for the Deposit

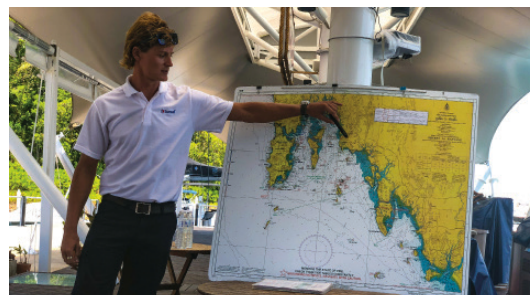
AREA AND BOAT BRIEFINGS

Thailand briefings are now available online [here](#). We ask the guests to view both area and **safety briefings** before arrival in order to get the best information about the region. After viewing it, you are welcome to send any questions via email to our Customer Service or Holiday Planner. Guests can also have consultations with the Base Manager upon arrival. Only Skipper and First Mate can participate in the consultations, while wearing a face mask. These are arranged at the Reception upon arrival.

Upon check-in procedure, you will receive Check In paperwork. Please read through it carefully in order to be ready for your onboard boat briefing. Once you have boarded your boat, a technician will come aboard and explain all operating systems to you. This will include the rigging, electronics and safety equipment. Please make sure only the Skipper and First Mate are onboard for the briefing, while wearing a face mask. Ensure you are familiar with everything onboard your yacht. It is important you are aware of the location of all safety equipment (lifejackets, harnesses, first aid kit, fire extinguishers, fire blanket and tool box) before departure.

SAILING LICENCE

Although no sailing licences are required for cruising in Thailand, you will need to fill out our **sailing CV** to see if you have the experience to charter a yacht with Sunsail. If you have a sailing certificate, we strongly recommend that you take this on holiday with you too.



WHAT TO DO WHILST WAITING FOR YOUR BOAT

- Provisioning
- Watch online briefings
- Read through the Check In paperwork
- Enjoy a leisurely lunch and swim in the rim flow pool in The Port of Call restaurant, open until 19.00
- Visit Bang Pae Waterfall (only 15 minutes by taxi)
- Make one of the shore-based tours,
- We are more than happy to help organize trips like a visit to the elephant or gibbon sanctuary
- Check out the Gym or the Health Spa in the Ao Po Marina

PROVISIONING

If you have preordered provisioning for your boat, please check your order is complete. You can order here: store.sunsail.com, just please note that it should be done at least a week prior to your embarkation.

Provisioning is also possible from the base- a large Tesco Lotus and Makro Supermarkets are 30 min away with a taxi. You can easily book your transfer on the reception, or you can do it en-route from the airport or a hotel.

Alcohol purchasing hours are 11.00 - 14.00 and 17.00 - 24.00. Water, ice, charcoal and limited alcohol are also available from the base.

It is advisable that you stock up before leaving the base as it is difficult to provision around the cruising area.

COOL BOXES

Cool boxes are available at the base at first comes-first serve basis at no additional charge, only one per yacht.

BARBECUE

All yachts are equipped with a barbecue, so feel free to order some briquettes and fire starters from the Office! While in use, please move your dinghy to the bow and have a bucket of water handy.

WIFI

We offer wifi hotspots for rent to Sunsail customers. Price is 350THB per day plus 3000THB refundable deposit.

MUSIC - Stereo with a USB and audio plug are available to our guests, just bring the cables and plugs!

ELECTRICITY

Standard voltage on all yachts is 12 V. All Catamarans and 44 Monohulls are equipped with a generator so you can use the 220 V sockets. In case you are chartering a different Yacht type, bringing a 12 V inverter is a good idea.

BOAT PAPERS

Onboard you will find laminated copies of "The Blue Book". These are the Thai registration documents for the yacht and must remain on board at all times and should be shown to the Thai authorities upon request.

CURRENCY EXCHANGE AND CREDIT CARDS

The base has credit card facilities, but in the cruising area plastic is accepted only at larger restaurants and resorts.



WATER AND REFUSE

Your water tanks will be full at the start of your transfer. Please feel free to top up with a dock hose or ask a staff member to help you before you leave, as water is difficult to obtain in the cruising area.

Most restaurants will take your refuse if asked politely, especially if you separate the plastic bottles and cans for recycling. Please dispose of your rubbish at earliest rate and do not keep it for the entire charter.

BEFORE LEAVING THE BASE

- Please ensure you have all the kitchen equipment and bedding you require, extra bedding and some cooking utensils are available upon request.
- Due to new COVID 19 regulations, we are no longer supplying snorkels and masks onboard. However, they are available for purchase at the base office for the price of 750THB (25USD). We have different sizes of fins available onboard, in case you require different sizes, the base staff is happy to help.
- Make sure the fuel/water tanks are full.
- Make sure you have your boat papers.
- Make sure you are provisioned.
- Make sure you have enough cash.

The latest that a Sunsail yacht can depart from the marina is 5pm as the nearest anchorage is half an hour away and **all yachts must be anchored by 5.30pm**. The area and yacht briefings take up to an hour each and provisioning shopping will take around three hours including taxi transfers, therefore if you wish to depart on the day your charter starts you should arrive no later than noon if you are doing your own provisioning, or 3pm if you have provisioned online.

Make sure you are on the fuel dock **by 16.30** if arriving on the afternoon before the end of your charter, or **by 8.30** on the morning of your disembarkation.

All yachts **MUST** stop on the fuel dock, regardless of the fuel option.

REFUELING

Your yacht comes with a full tank of diesel, and the dinghy outboard is filled with 10L of petrol mixed with 2 stroke oil. Another 10L are in the spare can.

Ao Po is currently the only place where you can refuel, so you may need to come back to base. Please never allow the fuel gauge to drop below quarter of the tank.





SKIPPERED CHARTER

Skippers time with you on the boat is from 12.00 to 12.00 the next day. He is responsible for the safety of your yacht so he is never to leave it unattended.

If you have a skipper ordered for less than full duration of your charter, then he will be on board the yacht from 16.00 to 16.00, that will allow for a meet-and-greet and full next day. In this case the guests are required to do all the briefings before sailing out.

The tip for the skipper is at a client's discretion, usually between 10 - 20% of the charter price.

4 HOUR BREAKDOWN GUARANTEE

We want to make sure your sailing vacation is fun, memorable and successful. So if you have any problems during your yacht charter, please call us and we'll sort them out within 4 working hours from your call. Check out more details [online](#).

IT COVERS

- Engine
- Transmission
- Windlass
- Sails
- Standing and running rigging
- Battery and alternator

IT DOESN'T COVER

- Electronics and Generator
- VHF
- Refrigeration
- Air conditioning
- Water maker
- CD player
- Marine toilets
- Water pump
- Dinghy and outboard
- Depth and speed instruments

Note: Breakdowns occurred outside the defined sailing area and hours (8am-5pm), problems due to user negligence, bad weather or force majeure are not covered.



SUSTAINABILITY

As passionate sailors, we want to look after the beautiful oceans and wildlife. It's all about the little things, which collectively make a big difference. Here's a few tips on how to minimise your footprint when sailing:

- Never throw anything into the sea.
- Use holding tanks in marinas and at anchorages. Empty them when at least two miles from the nearest land.
- Be careful while anchoring.
- Do not collect any shells from the beach or the sea.
- Avoid any accidental spills into the sea when refueling.
- Turn off electricity.
- Minimise plastic.
- Take short showers.
- Buy local.
- Use eco-friendly and fair-trade products.
- Recycle and reuse.
- Sail! Use less motor.

To learn more about our sustainability activity and work with charities around the world, from protecting the local marine life, to introducing local recycling programmes, visit sunsail.co.uk/sustainable-tourism.

YOUR SAFETY

Please locate your safety card when you get onboard & ensure that all crew read it before leaving the marina. If you cannot find it, then please contact reception who can provide a replacement.

We care a lot about your personal safety, so please read more about these topics in the safety card:

- **Accidents & Illness**
- **Be Aware & Safe**
- **Swimming & Beach Safety**
- **Alcohol & Drugs**



WHEN YOU RETURN TO THE BASE

RETURN TO BASE PROCEDURE

- Please empty all holding tanks and bilges before returning to base.
- Use VHF channel 72 to call Phuket Sunsail base about 15 min before arriving in order to get instructions and head towards the fueling dock. There our staff will meet you and drive the yacht to the dock after refueling.
- Yacht must not enter the marina without a member of the staff on the helm.
- Make sure the bottom of each fender is almost touching the water.
- Remember there can be a strong current running North on a rising tide and South on the falling tide. Slack water is one hour before high and low water.

BEFORE YOU LEAVE YOUR BOAT

Please ensure:

- Your questionnaire has been completed online
- You have had a debrief with one of our technicians; please inform the technician of any faults on the boat. This enables us to keep our boats in the best condition and ensures the boat will be ready for the next customer.
- Water tanks have been refilled
- Sheets and towels are placed in pillow cases and left in the cockpit.
- All rubbish has been removed and disposed of in marina bins.
- The kids life jackets have been returned
- All personal possessions have been removed; please check thoroughly as items are often left onboard.
- Navigation equipment; including all charts and pilot books, has been returned to the chart table.
- All hatches are closed.
- The keys have been left in the chart table.
- Your transfer has been arranged with reception.



Optional Extras

IF YOU DIDN'T PRE-ORDER YOUR OPTIONAL EXTRAS, PLEASE ASK AT THE RECEPTION



ONE / TWO PERSON KAYAKS

Our one- and two- person kayaks provide the freedom of exploration of our bays and beaches.

STAND UP PADDLE BOARDS (SUPs)

SUPs are a great way to explore our coastline and beaches. They are light and easy to maneuver which makes them the ideal tool to find your very own private spots.

POOL NOODLES

Ideal for floating around the boat!

MASKS AND SNORKELS

No need to pack them in big cases, just buy your masks and snorkels on spot!



ENJOY A CAREFREE HOLIDAY... ON THE WATER

STAY CONNECTED

Looking for WI-FI Internet connection while sailing around the globe? For a nominal fee, you can check your email, read the [Sunsail blog](#) for sailing tips and keep up on social media. If cutting the cord on your vacation isn't an option, ask your Sun-sail Holiday Planning Specialist about adding WI-FI to your sailing package.



USEFUL INFORMATION

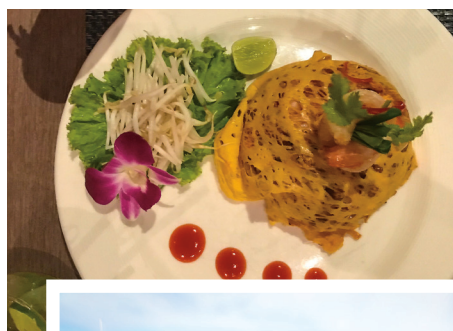
NON-SAILING ACTIVITIES

Restaurants and tipping

Eating out can be extremely good value. If you eat at a local food stall you can get a meal for as little as THB 100 per person. Even eating in local restaurants you generally pay less than THB 200 per course for delicious Thai food. Alcohol is generally more expensive than food. A small bottle of beer is about THB 80 and a reasonable bottle of wine about THB 1000.

Thai food is all cooked to order using fresh ingredients and lots of chilli. It is quite easy to ask for the meal to be made a little less spicy for western tastes. Seafood features on every menu with chicken, pork and beef also available as well as great vegetarian food. Rice and noodles are also main staples but western food is also easily available.

Tipping is not expected, but is always appreciated. 10% would be considered more than ample.



Fishing

Fishing with rod and reel or hand lines is permitted in all the cruising area. Hand lines can be purchased at the local shops on your way from airport to the base. There are no recorded instances of Ciguatera poisoning.

Diving Schools

Diving in Thailand is excellent. You must carry a PADI open water certificate or equivalent to be able to dive. If you wish to dive while chartering, we recommend Koh Phi Phi Don or Koh Racha Yai, where there are good diving centres, like [H2O Sportz](#) (+66 81 894 2124)

The Similan islands are a world class diving destination, accessible between November and April, subject to weather conditions. This National Park is 60 miles North of Patong and requires a charter of minimum 7 days. The Surin islands are another 50 miles North of the Similans and also offer superb diving but fewer diving operators visit them. Both are National Parks and are subject to daily entry fee which will be collected on site.





LANGUAGE - USEFUL WORDS & PHRASES

Hello / Goodbye	Sawat-dee Khrap/Kha (Male/Female)
How are you?	Sabai Dee Mai (Khrap/Kha)
Thank You	Kop khun (Khrap/Kha)
You're welcome	Mai pen rai
Where is ...? U tee nai?
How much?	Tow rai?
Taxi/ Pickup truck	Roht Song Taew
Long Thai boat	Rua Hang Yao
Island	Koh

CRUISING AREA

North- East Season

The cruising area includes Surin and Similan islands and all Thai Waters down to Koh Tarutao. Clients are always asked to complete a waiver of responsibility form prior to departure if intending to cruise to the National Parks (or outside of the chart 308). That area also requires a daily fee of 400 Baht per person and per yacht.

South - West Season

The Surin islands and anchorages on the West coast of Phuket cannot be used, and the border to Myanmar/ Burma shouldn't be crossed under any circumstances. The whole cruising area has a tidal range of 3.5m at high water springs. Avoid the mooring buoys which are not well maintained.



PREVAILING WINDS

The Northeast Monsoon : From November to April the prevailing wind blows from the northeast at between 10 to 15 knots with generally calmer seas. This is the drier season.

The Southwest Monsoon : From May to October the prevailing wind blows from the southwest from between 15 to 25 knots with large ground swells. Squalls of 40 knots can sometimes develop rapidly from the west so keep a good watch to windward. This is the wet season and some rain can be expected every day with the wettest months generally being August, September and October.

WEATHER FORECASTS

You will be given a one week forecast on the beginning of your charter. Additionally you can also check it here:

- Internet** windguru.cz or windfinder.com
windy.com
internet cafes at Ao Nang,
Phi Phi and Lanta
- VHF Radio** 89.5, 90.5 and 91.5 FM
general updates each morning



TIDAL STREAMS

Tidal streams arrows and rates are marked on the charts and vary from 0.1 knots to 2.2 knots. This is the strongest current which will be when the tide drops 0.7 meters in one hour.

There can be strong currents on the approaches to and also in the marina of up to 2.0 knots on the flood and 3.0 knots on the ebb, so always be careful when swimming from the boat while at anchor. If there is a current it is advisable to tie a fender to a mooring line and trail it behind the boat.

CALCULATING YOUR DEPTH OF WATER

During your trip you want to be on top of the tides. You can download an app that helps you to do that, or check out a tide table here: aopograndmarina.com/#tideTable

			Example	
Hight of tide at	Time?		2,6	Take this off the tide table provided
Chart Datum	Plus (+)		10	Insert the depth you are anchoring in or transiting over
			12,6	
Keel offset	Minus (-)		1,4	This is the draft of the yacht off the specification sheet
Depth sounder			11,2	This is what you should see on the depth sounder



MOORING BUOYS

Anchoring is the safest and most common way to moor in Thailand, however there are mooring buoys as well. You may use national park mooring buoys, which are orange with a blue band and about 50cm in diameter, but only with extreme caution. Some mooring buoys are laid in extremely shallow water and may only have just a rotten piece of rope holding it to the very small mooring block. Never leave the yacht unattended on a mooring buoy and never use mooring buoys overnight.

Never anchor on coral. Wilfully damaging coral is punishable by a fine of up to 500,000 baht and 5 years in prison.

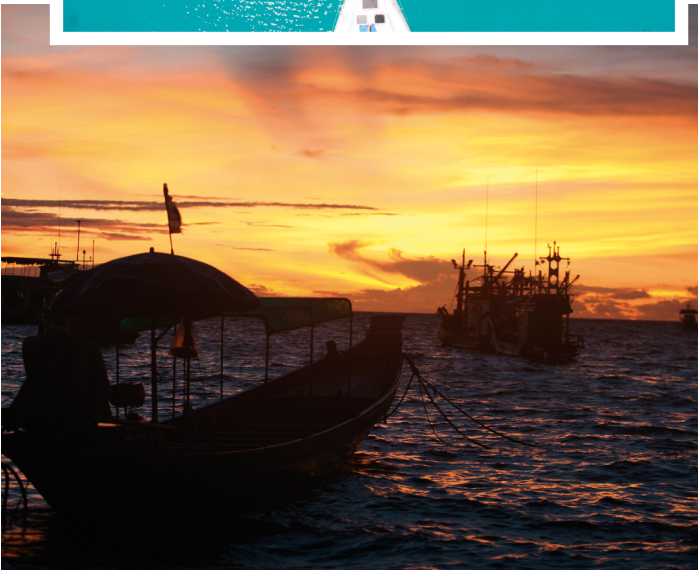
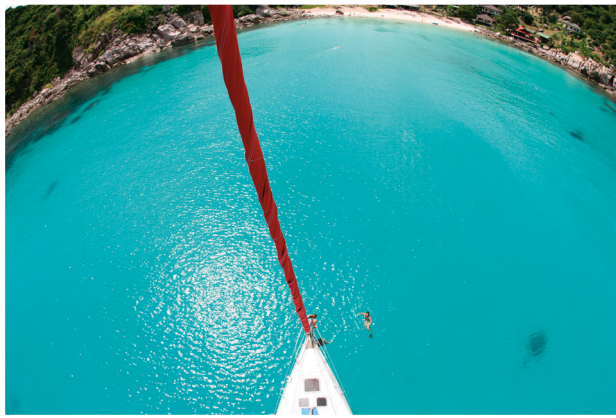
ACCIDENTAL GROUNDING

If you should accidentally run aground the most important thing is to get off again as soon as possible - if the tide is **rising** then this is accomplished easily. Simply motor off into deeper water as the tide lifts you off. If the tide is on it's way **out**, then you need to act quickly: Immediately try to motor off in the direction you went on using full engine power and call the base and give the GPS position. It may help if all your crew stands on one side near the shrouds to tip the boat over as much as possible.

If you are unable to get off you will have to wait for the tide to go all the way out and come back in to lift you off which could take up to twelve hours. While this happens, the boat may lean over alarmingly, but it will refloat itself. You will have to :

- Close all seacocks until the boat comes upright again to prevent flooding.
- Drop your bow anchor into the dinghy and lay it out towards deeper water and pull tight.
- Pump the bilges dry, empty your holding tanks and stow away all loose items.

Grounding is not a pleasant experience so try to make sure it does not happen to you.



RULE OF THE ROAD

Do not assume that other vessels understand the rules of the road and who is the give way vessel and who is the stand on vessel. Be ready to slow down and let other vessels pass in front of you if necessary. Thai fishermen actually believe that crossing another boats wake is bad luck and will always try to pass in front of you.

FISHING NETS

Beware of the fishing nets, especially in the Phang Nga bay area. They are marked with a flag at either end and are about 200 meter long and stand about 1.5m off the bottom and often have a longtail boat nearby. If the fisherman is standing upright in his boat then he is either throwing or pulling in the net, so keep well clear. Also avoid trawlers working in pairs dragging a net between them in the deeper waters of the southern part.

In case you manage to get entangled in the net, be very careful while untangling - you should be able to cut through with a knife, but will asked to compensate the fisherman (around 3000 Baht). Inform the base manager at earliest convenience.

SUNSET AND ANCHORING

The sun sets between 6pm in the NE season and 6.30pm in the SW season, when cloudier skies mean it will be dark earlier. It is totally dark within 15 minutes of sunset. You must arrive to your overnight anchorage by 5pm and be safely anchored by 5.30pm.

NIGHT SAILING

Night Sailing is not permitted; you must be moored at least one hour before sunset at all our locations.

It is strictly forbidden to sail alone; we require two persons minimum on board.



MARINE ANIMALS

Jellyfish

There are many species of jellyfish in the cruising area and there have been several instances where clients who have been stung by jellyfish have required hospital treatment. If you have allergies, it is advised to wear stinger suits or refrain from swimming.

If you are stung

- Immediately exit the water and apply copious amounts of vinegar to the affected area.
- Pour vinegar over the tentacle before attempting to remove it with tweezers.
- Do not try to rinse it off with fresh water
- You can then immerse the affected limb in hot salt water or apply a hot compress.

Generally the affected area will usually only be a minor irritation, similar to a bee sting and the sting area is normally itchy. Should you start to experience any additional signs or symptoms you should contact the base immediately for help and advice on where to seek medical assistance.

Coral stings and cuts

Several species of poisonous coral will have a painful sting if touched or stepped on while snorkelling. If you are stung immediately exit the water and apply copious amounts of vinegar to the affected area and then immerse the affected limb in hot water or apply a hot compress.

Cuts and abrasions caused from coral have a high risk of infection, so thoroughly clean the wound as soon as possible. Avoid swimming afterwards.



Fish

There are also several species of poisonous fish with spines which can sting if they are stepped on or touched while snorkelling. Stingrays are also poisonous and can inflict a nasty wound with their barbed stings.

If you are stung by a fish immediately exit the water and treat with hot water. You may require a tetanus injection.

Sea Urchins

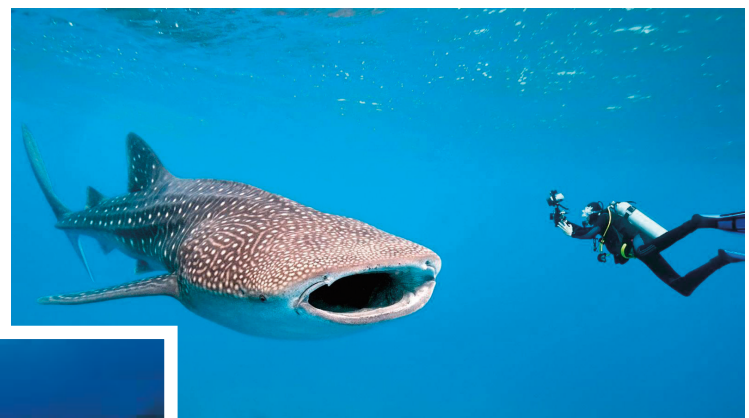
Sea urchins are not poisonous but their spines are very painful if touched or stepped on and will normally break off if attempting to pull them out with tweezers.

Hot water is again the best treatment and you may also require a tetanus injection.

Sharks and Sea Snakes

There are several species of sharks in these waters but there have been no recorded instances of shark attacks in Thailand.

Sea snakes although highly venomous are actually very timid and avoid swimmers.





REGATTAS IN PHUKET

As Phuket offers a good selection of regattas to take part in, you are welcome to join with some of our yachts. Here are some of the better known regattas: [Kings Cup](#), [Cape Panwa Race Week](#), [Bay Regatta](#).

If you are participating in a regatta kindly note the following:

Charter Start/end

- You must book the boat with sufficient time to move it from Ao Po Grand Marina to the area of the regatta taking into consideration the prohibition on night sailing and charter Start / End times
- It is recommended that you go to the venue and register prior to charter start.

Gennaker

- We supply a standard charter sized downwind sail (gennaker) flown with the tack attached to the bow. Price is 1000 Baht per day.
- Spinnaker poles are not available as the yachts are not equipped to carry a spinnaker pole.
- You are not permitted to bring and use your own spinnaker/gennaker.

Damage Waiver

- You are required to take the normal insurance required to charter a yacht.

Racing deposit

- If you are entering a regatta and/or carrying a gennaker, this is considered racing and the refundable deposit amount is Euro 5000.00 (cash or credit)
- This deposit covers any loss or damage caused during the racing period and will be returned once the yacht is handed back in a satisfactory condition.



Regatta Fees

- To be paid directly to the Regatta Organizer.

IRC Certificate

- This certificate is available from the Regatta Organizer, to be paid directly to the Organizer as well.

Sail Numbers

- All the Sunsail 41i's have a sail number on the mainsail.
- The Regatta Organizer will supply a bow sticker with a number.

Halyards

- Foresail halyard tension is preset.
- Should you over tension the halyard you risk overstressing the roller furler swivel and could damage the foil.
- On return to base all foils will be checked as part of the debriefing.



Damage

- You must inspect the hull for any external damage as the vessel will be inspected upon return for damage.
- Any defects are to be noted on the pre-charter documentation.
- All decals/stickers must be removed at the end of charter. Removal fee is 1000 baht per item.

Inventory

- You must race with all charter inventory carried on board and use the standard genoa/mainsail used for charter.

Anchors

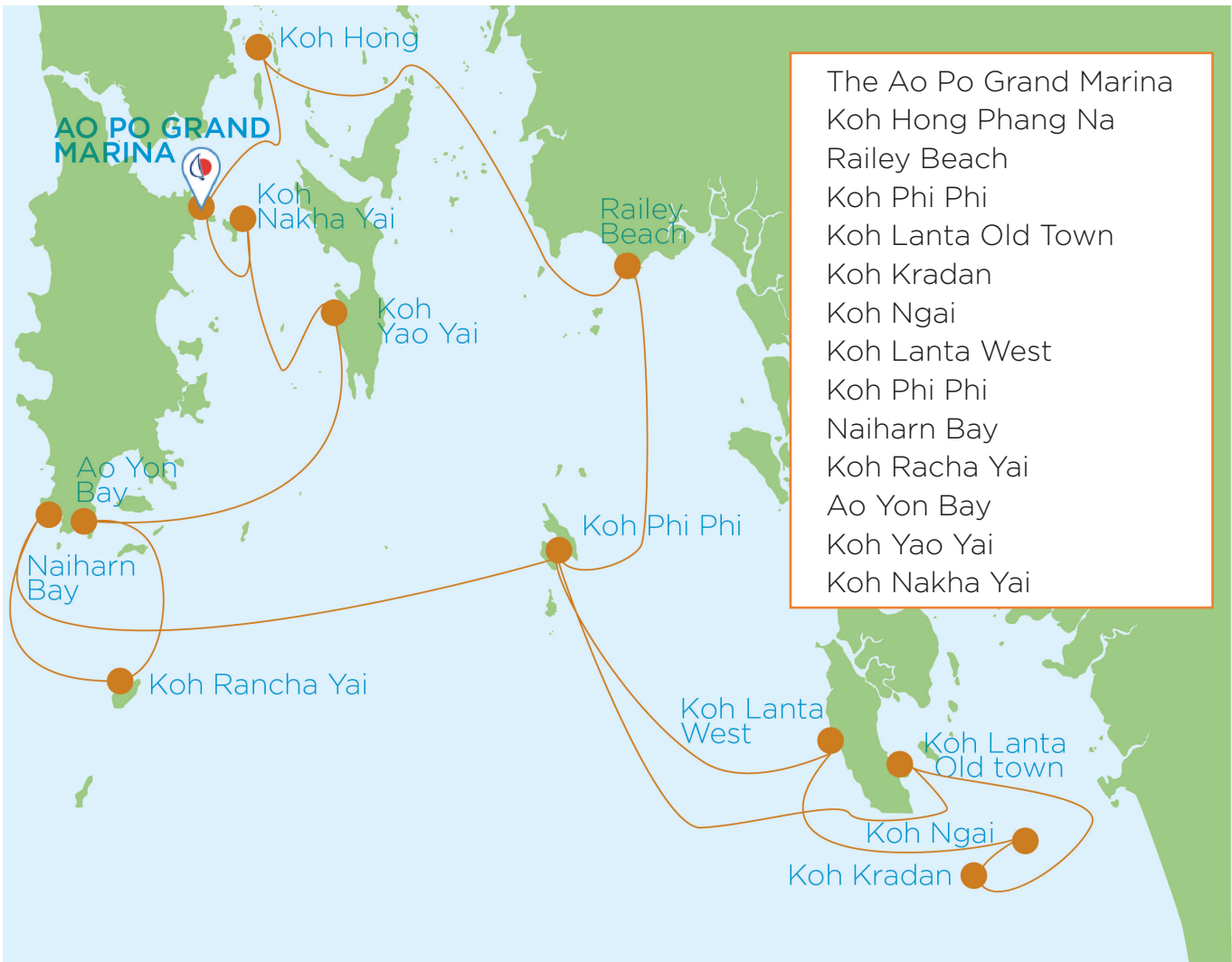
- The primary anchor is a vital piece of safety equipment.
- You may not remove the anchor from the vessel.
- You may not disconnect it from the vessel and leave it “anchored” during racing.

Anchorage

- At least two qualified crew members sleep on board the yacht while it is anchored overnight.

SUGGESTED ITINERARIES

TWO WEEK ROUTE - NORTH EAST SEASON





**ONE WEEK ROUTE
NORTH EAST SEASON**



- | | |
|-----------------------------------|------------------------------------|
| DAY 1
Koh Hong Phang Na | DAY 5
Koh Yao Yai |
| DAY 2
Railey Beach | DAY 6
Koh Rang Yai |
| DAY 3
Koh Phi Phi | DAY 7
Ao Po Grand Marina |
| DAY 4
Naiharn Beach | |

**ONE WEEK ROUTE
SOUTH WEST SEASON**

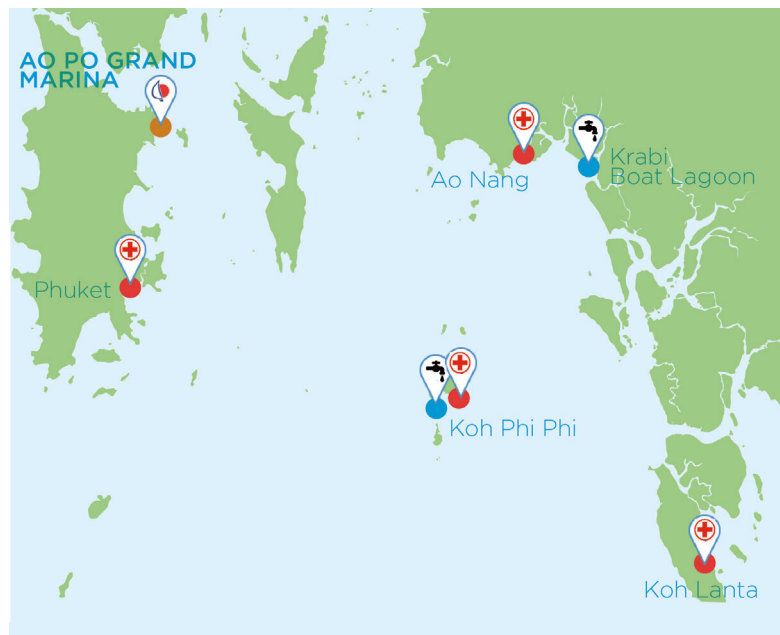


- | | |
|-----------------------------------|------------------------------------|
| DAY 1
Koh Hong Phang Na | DAY 5
Ao Yon Bay |
| DAY 2
Koh Yao Noi | DAY 6
Koh Nakha Yai |
| DAY 3
Koh Dam Khwan | DAY 7
Ao Po Grand Marina |
| DAY 4
Koh Phi Phi | |

TWO WEEK ROUTE - SOUTH WEST SEASON



HOSPITALS AND WATER REFILL SPOTS





DESTINATION SPOTLIGHTS

KOH HONG PHANG NA

The Hong (Thai for “Room”), which gives the island its name, is a stunningly beautiful, enclosed lagoon with large surrounding rock faces. Koh Hong is situated toward the North of Phang Nga Bay near the famous James Bond Island. Traveling to the Hong is best by dinghy or kayak and, once inside the lagoon, you will find perfect opportunities for exploring, photography and relaxing. During the day, kayakers and day-tour boats will be exploring the area, especially the caves at the southern side of the Hong.



FACILITIES & SERVICES	NE	SW	COMMENTS	FACILITIES & SERVICES	NE	SW	COMMENTS
Day anchorage	✓	✓		ATM	✗	✗	
Night anchorage	✓	✓		WiFi	✗	✗	
Provisioning	✗	✗		Ice	✗	✗	
Restaurants	✗	✗		Medical Centre	✗	✗	
Bars	✗	✗		Water refill	✗	✗	
Spa	✗	✗					

KOH PHING KAN - JAMES BOND ISLAND

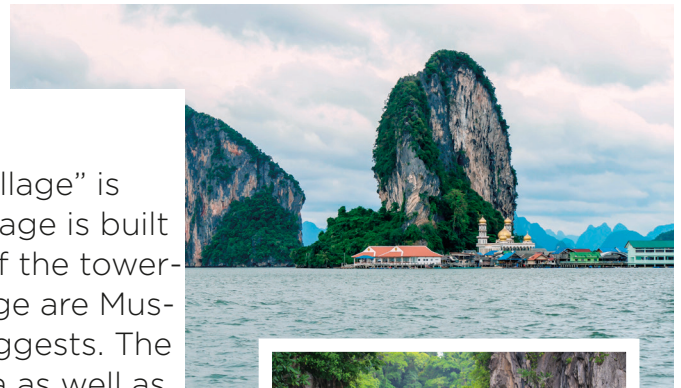
The world famous island that features in ‘The Man With The Golden Gun’ offers beautiful rock formations and a small lagoon with a white sandy beach toward the north of Phang Nga Bay. This Thai National park protected island is a must see for anyone chartering in the region. Access to the island is best by dinghy during the day and there is a small National Park fee for going onto the island. You can count on small food vendors traveling to the island daily in North East Season .



FACILITIES & SERVICES	NE	SW	COMMENTS	FACILITIES & SERVICES	NE	SW	COMMENTS
Day anchorage	✓	✓		ATM	✗	✗	
Night anchorage	✗	✗		WiFi	✗	✗	
Provisioning	✓	✓	small food vendors	Ice	✗	✗	
Restaurants	✗	✗		Medical Centre	✗	✗	
Bars	✗	✗		Water refill	✗	✗	
Spa	✗	✗					

KOH PAN YI

Koh Pan Yi, otherwise known as “The Sea Gypsy Village” is situated in the far North of Phang Nga Bay. The village is built almost entirely on stilts over the water just south of the towering limestone rock. The People who live in the village are Muslim and are in fact not Sea Gypsies as the name suggests. The village offers some of the finest seafood in the area as well as small souvenir shops, ATM and a small medical facility. A short distance north of the island, there are a sequence of caves harnessing some ancient cave drawings dating back to the Neanderthal times.



FACILITIES & SERVICES	NE	SW	COMMENTS	FACILITIES & SERVICES	NE	SW	COMMENTS
Day anchorage	✓	✓		ATM	✓	✓	
Night anchorage	✓	✓		WiFi	✓	✓	
Provisioning	✓	✓	Souvenir Shops	Ice	✗	✗	
Restaurants	✓	✓		Medical Centre	✓	✓	
Bars	✗	✗		Water refill	✗	✗	
Spa	✗	✗					

KOH ROI

This small island situated on the Northern tip of Koh Yao Noi offers complete peace and tranquility to anyone chartering in the area. Visitors can enjoy swimming from the beach as well as exploring the mangrove lagoon and viewing the hundreds of Fruit Bats hanging from the trees.



FACILITIES & SERVICES	NE	SW	COMMENTS	FACILITIES & SERVICES	NE	SW	COMMENTS
Day anchorage	✓	✓		ATM	✗	✗	
Night anchorage	✓	✗		WiFi	✗	✗	
Provisioning	✗	✗		Ice	✗	✗	
Restaurants	✗	✗		Medical Centre	✗	✗	
Bars	✗	✗		Water refill	✗	✗	
Spa	✗	✗					

KOH HONG KRABI

Situated between main land Krabi and Koh Yao Yai, this stunning island encompasses one of the largest semi-enclosed lagoons in the area. Surrounded by towering limestone cliffs, the lagoon is accessible at all states of the tide and offers great swimming, photography and exploration. National Park Moorings are situated to the North of the island for day boats and charter yachts. East of the hong entrance, there is a superb white sand beach and behind the mangrove trees is a large Amphitheatre cave housing bats, stalagmites and stalactites.



FACILITIES & SERVICES	NE	SW	COMMENTS	FACILITIES & SERVICES	NE	SW	COMMENTS
Day anchorage	✓	✓		ATM	✗	✗	
Night anchorage	✗	✗		WiFi	✗	✗	
Provisioning	✗	✗		Ice	✗	✗	
Restaurants	✗	✗		Medical Centre	✗	✗	
Bars	✗	✗		Water refill	✗	✗	
Spa	✗	✗					

KOH YAO NOI EAST SABAI CORNER & SIX SENSES RESORT

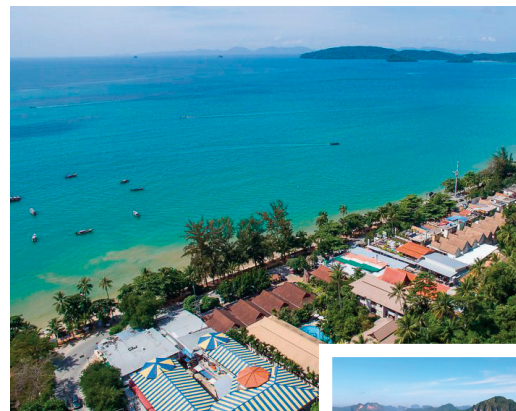
This secluded bay situated on the East Coast of Koh Yao Noi offers a sheltered anchorage during the South West Season. The stunning beach lined with palm trees is the perfect day retreat as well as the beautiful Six Senses Resort and Spa. A short walk from the beach are a handful of restaurants and shops where basic provisions can be purchased. Koh Yao Noi has a single road running around the island connecting all resorts to the passenger terminal situated on the South of the island.



FACILITIES & SERVICES	NE	SW	COMMENTS	FACILITIES & SERVICES	NE	SW	COMMENTS
Day anchorage	✓	✓		ATM	✗	✗	
Night anchorage	✓	✓		WiFi	✓	✓	In the resort
Provisioning	✓	✓	Local small shops	Ice	✗	✗	
Restaurants	✓	✓		Medical Centre	✗	✗	
Bars	✗	✗		Water refill	✗	✗	
Spa	✗	✗					

RAILEY / AO NANG

Railey Beach, situated alongside Ao Nang Beach is a vibrant tourist destination visited by many people each year. On shore there are numerous restaurants, bars, shops, massages and spas. Railey is commonly known as a hotspot for people interested in rock climbing as the bay is surrounded by stunning limestone cliffs. Yachts can anchor in the bay about 150m from the beach and enjoy good swimming and snorkeling conditions to the North West of the bay.



FACILITIES & SERVICES	NE	SW	COMMENTS	FACILITIES & SERVICES	NE	SW	COMMENTS
Day anchorage	✓	✗		ATM	✗	✗	
Night anchorage	✓	✗		WiFi	✓	✗	
Provisioning	✓	✗		Ice	✓	✗	
Restaurants	✓	✗		Medical Centre	✓	✗	
Bars	✓	✗		Water refill	✗	✗	
Spa	✓	✗					

KOH DAM KHWAN - CHICKEN HEAD ISLAND

This famous island gets its name from the limestone rock to the south resembling a chickens head. The beautiful island is surrounded by a shallow reef, excellent for snorkeling and swimming as well as a white sandy beach fringed with palm trees. At sunset the island becomes alive with the chorus of locusts and fruit bats who have colonized the island.



FACILITIES & SERVICES	NE	SW	COMMENTS	FACILITIES & SERVICES	NE	SW	COMMENTS
Day anchorage	✓	✓		ATM	✗	✗	
Night anchorage	✓	✓		WiFi	✗	✗	
Provisioning	✗	✗		Ice	✗	✗	
Restaurants	✗	✗		Medical Centre	✗	✗	
Bars	✗	✗		Water refill	✗	✗	
Spa	✗	✗					

KOH MAI PAI

Bamboo Island is situated to the north-east of Koh Phi Phi Archipelago, about 5 km from the northern tip of Koh Phi Phi Don, and is a true paradise island. The island is known by Thai locals as Koh Mai Phai. This very small island is just a short strip of white sandy beach which rises from the sea, about 600 meters wide and 700 m long. Its central part is covered with lush vegetation, and the bamboo trees, hence its name. On the north-eastern side of the island, there is a small bar for tourists, which serves drinks and some snacks. Government moorings are situated on the South Eastern side of the island for visiting yachts.



FACILITIES & SERVICES	NE	SW	COMMENTS	FACILITIES & SERVICES	NE	SW	COMMENTS
Day anchorage	✓	✓		ATM	✗	✗	
Night anchorage	✗	✗		WiFi	✗	✗	
Provisioning	✗	✗		Ice	✗	✗	
Restaurants	✗	✗		Medical Centre	✗	✗	
Bars	✓	✓		Water refill	✗	✗	
Spa	✗	✗					

KOH PHI PHI DON

The hotspot for most tourists visiting Phuket and surrounding area. Phi Phi Don offers some wonderful experiences including scuba diving, kayaking, relaxing on the white sand beaches and also exploring the islands many caves and rock formations. Phi Phi Don offers both quiet getaway's in some areas of the island and a vibrant, busy party atmosphere in others.



FACILITIES & SERVICES	NE	SW	COMMENTS	FACILITIES & SERVICES	NE	SW	COMMENTS
Day anchorage	✓	✓		ATM	✗	✗	
Night anchorage	✓	✓		WiFi	✓	✓	
Provisioning	✓	✓		Ice	✓	✓	
Restaurants	✓	✓		Medical Centre	✓	✓	
Bars	✓	✓		Water refill	✓	✓	
Spa	✓	✓					

KOH PHI PHI LEY

Home to the world famous MAYA BAY which is featured in the 2000 Movie 'The Beach' starring Leonardo Dicaprio. This tourist hotspot welcomes visitors from all over the globe to see the beautiful scenery and stunning water. Regularly the beach and Maya Bay is closed to ensure the area remains unspoilt and to preserve the natural ecosystem. The island is a must visit for anyone visiting the area and is a great option for people wishing to snorkel or scuba dive.



FACILITIES & SERVICES	NE	SW	COMMENTS	FACILITIES & SERVICES	NE	SW	COMMENTS
Day anchorage	✓	✓		ATM	✗	✗	
Night anchorage	✗	✗		WiFi	✗	✗	
Provisioning	✗	✗		Ice	✗	✗	
Restaurants	✗	✗		Medical Centre	✗	✗	
Bars	✗	✗		Water refill	✗	✗	
Spa	✗	✗					

KOH LANTA OLD TOWN

Koh Lanta Old Town is situated on the South East side of the island of Koh Lanta. Old town offers a real feel of traditional Thai-Chinese culture and a feeling of being stuck in time. Originally the town started as a sea gypsy village and over the years has developed into a vibrant town. There are many restaurants, bars and shops to explore whilst also taking in the breath-taking scenery of the surrounding area. Koh Lanta's archipelago encompasses a group of 7 islands - all with beautiful scenery, reef systems, caves and beaches.



FACILITIES & SERVICES	NE	SW	COMMENTS	FACILITIES & SERVICES	NE	SW	COMMENTS
Day anchorage	✓	✓		ATM	✗	✗	
Night anchorage	✓	✓		WiFi	✗	✗	
Provisioning	✓	✓		Ice	✗	✗	
Restaurants	✓	✓		Medical Centre	✗	✗	
Bars	✓	✓		Water refill	✗	✗	
Spa	✗	✗					

KOH MUK - EMERALD CAVE

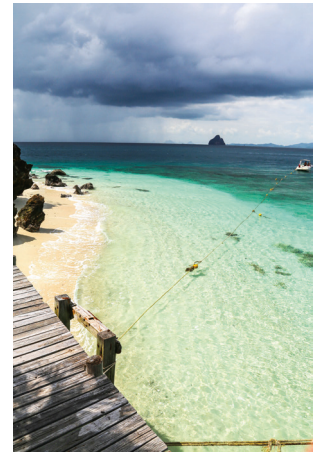
Koh Muk is home to the fascinating emerald cave. Enter by dinghy at low- to mid- tide and encounter a 50 meter enclosed cave followed by the large hong - lagoon enclosed inside the island. The beautiful island is home to many species of marine and wildlife including a large bat colony within the cave. The island also houses numerous beaches and bays which are ideal for over-night anchorages.



FACILITIES & SERVICES	NE	SW	COMMENTS	FACILITIES & SERVICES	NE	SW	COMMENTS
Day anchorage	✓	✓		ATM	✗	✗	
Night anchorage	✓	✗		WiFi	✗	✗	
Provisioning	✗	✗		Ice	✗	✗	
Restaurants	✗	✗		Medical Centre	✗	✗	
Bars	✗	✗		Water	✗	✗	
Spa	✗	✗					

KOH KRADAN

The small island of Koh Kradan is an idyllic getaway to avoid the crowds of the surrounding towns. The small island has a wonderful resort which is open year round for tourists. The island also has beautiful long sandy beaches as well as a fascinating reef to explore whilst swimming.



FACILITIES & SERVICES	NE	SW	COMMENTS	FACILITIES & SERVICES	NE	SW	COMMENTS
Day anchorage	✓	✓		ATM	✗	✗	
Night anchorage	✓	✓		WiFi	✓	✓	
Provisioning	✗	✗		Ice	✗	✗	
Restaurants	✓	✓		Medical Centre	✗	✗	
Bars	✓	✓		Water refill	✗	✗	
Spa	✓	✓					

KOH ROK NOK / NAI

Many sailors who cruise the islands always highlight this island as one of the nicest. Koh Rok Nok is situated 15NM South of Koh Lanta and is a scuba diving hotspot. The two island Koh Rok Nok and Koh Rok Nai both have excellent reefs and sea life, as well as a thriving onshore wildlife population. The island is protected to ensure the beauty remains.



Onshore, there is a small national park building where tourists can find relevant important information.

FACILITIES & SERVICES	NE	SW	COMMENTS	FACILITIES & SERVICES	NE	SW	COMMENTS
Day anchorage	✓	✗		ATM	✓	✗	
Night anchorage	✓	✗		WiFi	✗	✗	
Provisioning	✗	✗		Ice	✗	✗	
Restaurants	✗	✗		Medical Centre	✗	✗	
Bars	✗	✗		Water refill	✗	✗	
Spa	✗	✗					



KOH SIMILANS

The similan Islands are located 84km NorthEast of Phuket. Koh Similan is one of the most picturesque and well known island groups in the Andaman sea and is one of the 10 most interesting diving areas in the world, home to vast arrays of sealife. The little archipelago has become a hugely popular destination for yachts and tour boats over the last 10 years, but the Thailand government keeps the National Park closed during Monsoon season (May to October)

Similan Islands means Nine Islands in Yawi, which is the native tongue of the area: Koh Ba Ngu, Similan, Payu, Miang, Payan, Payang, Hu Yong, Hin Pousar, Koh Bon



FACILITIES & SERVICES	NE	SW	COMMENTS	FACILITIES & SERVICES	NE	SW	COMMENTS
Day anchorage	✓	✗		ATM	✗	✗	
Night anchorage	✓	✗		WiFi	✗	✗	
Provisioning	✗	✗		Ice	✗	✗	
Restaurants	✗	✗		Medical Centre	✗	✗	
Bars	✗	✗		Water refill	✗	✗	
Spa	✗	✗					



SHARE YOUR EXPERIENCE WITH US!

We'd love to hear all the adventures you had on the clear blue waters near our base!

Be sure to e-mail us all of your favorite moments or go online:

customer.care@thlmarine.com

feefo 



Ao Po Grand marina
113/1 Moo 6. Tambon Paklok
Amphur Thalang
Phuket 83110
Thailand