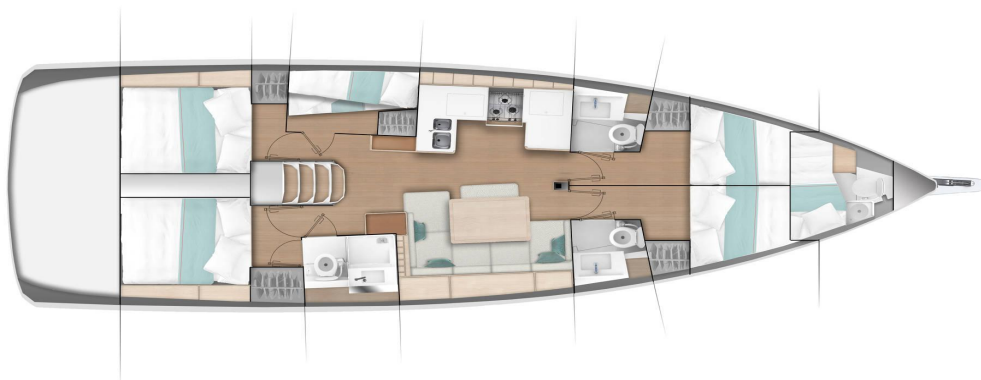


Sun Odyssey 490 – 5 Cabin



Shipyard:	Jeanneau	Engine:	80 HP
Launched:	2023	Fuel tank:	lt. 240
Length overall:	14.42 m	Water Tank:	lt. 640
Length of the hull:	14.00 m	Berths:	12 max
Width :	4.49 m	Cabins:	5 + 1 skipper
Draft :	2.24 m	Salon:	convertible
Sail Area:	ca. 109 m²	Heads:	3 + 1 skipper
Mainsail halfsticked with lazy jack and lazy bag			
Furling genoa			

Navigation:

Compass – Wind station - Log - Echosounder - VHF - Binoculars - Clock - Barometer - Chart instruments – Italian Waters Pilot Handbook in English – Logbook – Bearing compass - Fridge, GPS plotter - automatic pilot

Safety:

Life raft - Safety harnesses – Life jackets – Horseshoe lifebuoy and light – Electric torch – Flare pack– smoke buoys - Electric and manual bilge pump – Fog horn - Extinguishers – First aid kit – Repair kit for engine, sails and tender– Wooden plugs - Radar reflector – Emergency tiller for wheel steering - Sheers — Halogen lamp – - Scuba security float

Deck:

Electric windlass – **Bow Thruster** - Anchor with 70 m chain – Wheel – Gangway - Tender with rigid keel & two oars - Inflator – Small anchor with 15 m rope - Engine oil container– Bimini top – Sprayhood - Boathook - Fenders - Emergency anchor with 50 m rope – Winch handles - Rope (1X50m; 1x25m; 3x15m) – Bosun's chair - Bathing ladder – Water hose – Water, petrol, outboard fuel tank, - Gas bottles (Gas included) - Funnel - Bucket – Deck brush – Table – Outside shower - Work gloves - Cable 220V with battery charger – Cockpit cushion – Snorkelling Fins – Cockpit speakers – Wind breaker jacket – Wind Scoop .

Cabins/Galley:

Air Conditioning – Generator - Fridge - Hot water - Cooker with oven - Stereo - CD player - Pillows - Blankets – Bed linen – Towels - Cutlery - Glasses - Cups - Plates – Kitchen knives - Pots - Pans – 2 Italian espresso coffee makers – Coffee filters – Wooden spoons – Containers – Lemon squeezer - Grater – Tin opener – Bottle opener – Salad bowls – Thermos flask – Table cloth – Cabin & dining area fan

this document is not contractual