

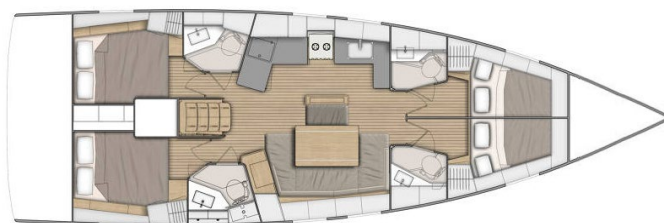


Sunsail 46 - 4 cabins

Specifications and Equipment List

Sunsail Charter Upgrades in BOLD

Hull Length:	44ft 9in 13,65m
Waterline Length:	43ft 5in 13.24m
Beam:	14ft 9in 4.5m
Draft:	5ft 9in 1.75m
Fuel Capacity:	53 US Gal 200 L
Water Capacity:	140 US Gal 530L
Engine:	57 hp



CONSTRUCTION

- Monolithic polyester contact hull
- Monolithic contact structural counter mould (Fabrics - resin) bonded to the hull
- Injected deck construction in glass fiber and Saeform foam sandwich, covered with non-slip diamond pattern
- **Shallow cast iron keel**
- Twin rudders hung with stainless steel stock
- **White coloured hull - Sunsail graphics**
- 8 Hull portlights

DECK EQUIPMENT

- **Classical aluminum mast**
- Anodised aluminum boom
- Cathedral type single-strand stainless steel standing rigging
- Split backstay
- Rigid boom vang with tackle
- Self-tacking jib with on-deck furler
- 2 Stand Up mainsheet blocks on the coachroof
- 1 Self-tacking jib track with traveller
- All lines brought back to the helm stations (except boom topping lift and genoa halyard)
- Complete running rigging: Mainsail halyard, Genoa halyard with cleat on mast, Boom topping lift with cleat on mast, Mainsheet, 1 Self-tacking jib sheet
- 6 Clutches
- Halyard covers
- 2 Flag halyards
- **2 electric winches in lieu of standard**
- 1 Aluminum Speed Grip winch handle
- 2 Winch handle holders
- **Custom heavy duty battened charter mainsail**
- **Charter upgrade, heavy duty furling genoa with UV protection strips**
- **Profurl genoa furler**
- **Stackpack LazyJack system in Sunsail blue with logo**
- Self-draining chain locker - Clench bolt - Hatch cover
- Single roller stainless steel bow fitting with offset roller
- **Additional anchor roller**
- **Bow stainless steel protection**

- 12 V - 1 000 W vertical electrical windlass - Remote control
- **Windlass control in cockpit with chain counter**
- 6 Aluminum mooring cleats, Length: 400mm / 153/4" - Stainless steel chafing plate
- Sail locker with stainless steel ladder and shelving unit
- 1 Open stainless steel pulpit
- 2 Stainless steel pushpits
- 2 Stainless steel handrails on coachroof
- **Outboard engine bracket**
- 1 Lifebuoy support bracket
- Welded ring on pushpit for flag
- **Custom double guard lines and stainless steel stanchions**
- Emergency ladder on pushpit
- Self-draining cockpit
- 1 Watertight compartment under cockpit benches & 1 Wet locker
- 1 Locker in cockpit bottom
- 1 Gas compartment under port helmsman seat
- Natural solid wood slatted cockpit benches
- Natural solid wood slatted helm seats with starboard storage locker
- Foldaway helmsman foot chock
- 2 Steering wheel consoles: Stainless steel steering wheels (900mm diameter / 2'11") - Anthracite leather covering - Steering gear at the helm station - Steering line transmission system - Stainless steel handrail
- 2 Deck access for emergency tiller
- 1 Emergency tiller
- 1 Steering compass on the cockpit table
- Engine throttle and control panel on starboard
- **"Luxe" cockpit table upgrade**
- Life raft stowage
- 1 Cockpit shower with mixer tap
- **Electric transom**
- Intermediate cockpit access step
- Natural solid wood decking on swim platform
- **Large swimming ladder attached to the aft platform**
- **Aft transom protection**
- **2 Companionway sunbeds**
- **Stainless steel anchor and galvanized chain**
- **Bimini and dodger**

SALOON

- **Light oak woodwork with charcoal material panelling**
- Laminated floorboards
- Wooden saloon companionway with moulded wood suspended steps
- **Specific non-slip surface on the companionway steps**
- 1 Stainless steel handrail with anthracite leather sheathing (to port)
- U shaped saloon bench
- **Custom upholstery**
- **Saloon table - convertible to double bunk with mattress**
- Central unit against central seat seat, backrest function
- Mirror on bulkhead, at base of companionway
- Storage under bench seats
- Stowage provided under the floor
- 1 Electrical panel for access to electrical connections
- 2 Coaming windows with 1 opening portlight on each side (with blinds)
- 2 Opening deck hatches with mosquito screen/blinds
- 1 Chart table
- **LED indirect lighting**

GALLEY

- Work top in Clay compact with Corian fiddles
- Stainless steel sink 2 rectangular basins - 1 Mixer tap with hot/cold water under pressure - Clay compact sink cover with cutting board function on back
- **Stainless steel cooker 3 burner oven/grill on gimbal**
- 1 85 L ice box, top opening
- **Refrigeration system, 12 V, in top-opening icebox**
- **Drainage for the ice box**
- Refrigerator (12V), front opening
- 3 Closed high shelves, 1 High open cubby hole locker
- Bin with access on the work top
- 1 Lower unit: 3 Storage drawer
- 1 Low unit: 1 Drawer 1 Door
- **Microwave**

2 SYMMETRICAL AFT CABINS

- 1 Double bed
- 2 Cupboards - 1 Cubby hole locker
- 2 flexible and multi-directional reading lights at bedhead
- 2 USB sockets
- 1 Cockpit opening window with curtain under cockpit seats
- **Additional opening porthole with mosquito screens (port and starboard)**

AFT HEADS

- **1 Electric toilet**
- 1 Holding tank
- 1 Polyester basin - 1 Hot/cold water mixer tap
- 2 Mirrors
- Toilet accessories
- 1 Porthole

2 SYMMETRICAL FORWARD CABINS

- 1 Double bed
- 1 Hanging locker - 2 Closed high shelves, 2 Open cubbyholes, 1 Drawer under the bed
- 1 Swivelling reading light
- 1 Deck hatch with mosquito screen/blind
- 2 USB sockets
- Access door to the head

FORWARD HEADS

- **1 Electric toilet**
- 1 Holding tank
- 1 Polyester basin - 1 Hot/cold water mixer tap
- Cabinet - Mirror
- Toilet accessories
- 1 Deck hatch

ENGINE

- Yanmar 57HP
- Engine control at the starboard helm station - Control panel
- Engine compartment: Soundproofing foam - Ventilation: 3 air intakes and 1 forced air outlets
- 1 Alternator 12 V / 125Ah
- 1 Rotomoulded diesel tank 200 L / 53 US Gal (under starboard aft berth) - Electronic gauge - Low level alarm - 1 Deck filler
- Filters: Seawater - Diesel - Water separator

- Fixed three blades propeller
- 1 Engine access through companionway (opening with 2 gas struts) - 2 Engine access through aft cabins
- **Bow thruster**

ELECTRICAL INSTALLATION

- 12V circuit
- **AGM batteries in lieu of standard and increased battery capacity**
- **Battery charger**
- **Navicolor monitoring system**
- 1 Power distributor
- 12 V Electrical panel (Fuses - Voltmeter - Water gauge - Fuel gauge - Battery warning - Fuel warning - Water warning)
- Sockets (110V or 230V)
- USB sockets
- **1 Shore power socket and cable (110V or 230V)**
- **Support bracket for shore power cables**
- Lighting: Overhead lights - Reading lights - Reading light, flexible and multi-directional
- LED navigation lights: 1 Masthead light - 1 Steaming light - 1 Anchor light on masthead
- **Fans in the saloon and the cabins**
- **Underwater light**
- **Generator**
- **Air conditioning**
- **Inverter**
- **Stereo system with interior and exterior speakers**
- **Full Raymarine electronic package**
- **Solar panel**

PLUMBING

- 1 Rotomoulded freshwater tank 330 L / 87 US Gal, under berth in forward cabin - 1 Deck filler
- **Additional water tank (200L / 53 US Gal), under starboard aft berth**
- Pressurised electric water pump - Expansion tank - Inline filter
- 40 L / 11 US Gal Electric water heater (engine use)
- 1 Rigid black water holding tank for each WC
- Electrical shower drain pumps
- 1 Electric bilge pump
- 1 Manual bilge pump

GAS

- 1 Box for 2 gas bottles in the cockpit (Diameter: 0,28m/ 11" x Height: 0,44m/ 1'5")
- Regulator and safety tap
- Gas leak detector
- **Enhanced safety gas system**

GENERAL EQUIPMENT

- **Mooring / dock lines / fenders**
- **Safety pack**
- **Charter pack**
- **Commissioning and delivery to charter base**

NOTE

The Builder reserves the right to change or amend the contents of this document at any time without prior notification to any third party, and no liability will be accepted for errors contained within the same.